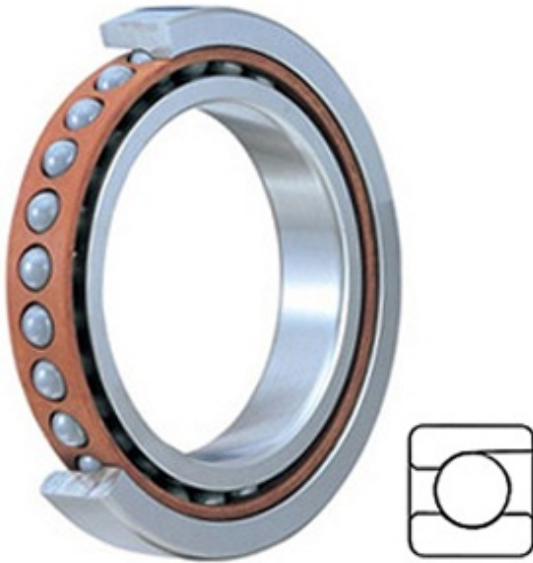




Shandong Tai Shi Te Bearing Co., Ltd.



2MMV213WICRSUL Bearing 2D drawings and 3D CAD models

2.559 Inch | 65 Millimeter x 4.724 Inch | 120 Millimeter x 0.906 Inch | 23 Millimeter TIMKEN 2MMV213WICRSUL Precision Ball Bearings

Bearing No. 2MMV213WICRSUL

Category	Precision Ball Bearings
Inventory	0.0
Manufacturer Name	TIMKEN
Minimum Buy Quantity	N/A
Weight	0
Product Group	B04270
Enclosure	Open
Precision Class	ABEC 7 ISO P4 ABEC 9 ISO P2
Material - Ball	Steel
Number of Bearings	1 (Single)
Contact Angle	15 Degree
Preload	Light
Raceway Style	1 Rib Outer Ring
Cage Material	Phenolic
Rolling Element	Ball Bearing
Mounting Arrangement	Universal
Flush Ground	Yes
Inch - Metric	Metric
Other Features	Single Row Angular Contact Super High Precision
Long Description	65MM Bore; 120MM Outside Diameter; 23MM Width; Open Enclosure; ABEC 7 ISO P4 ABEC 9 ISO P2 Precision; Steel Ball



Shandong Tai Shi Te Bearing Co., Ltd.

	Material; 1 (Single) Bearing; 15 Degree Contact Angle; Phenolic Cage Material; 1
Category	Precision Ball Bearings
UNSPSC	31171531
Harmonized Tariff Code	8482.10.50.28
Noun	Bearing
Keyword String	Ball Angular Contact
Manufacturer URL	http://www.timken.com
Weight / LBS	2.2
d	2.559 Inch 65 Millimeter
B	0.906 Inch 23 Millimeter
D	4.724 Inch 120 Millimeter